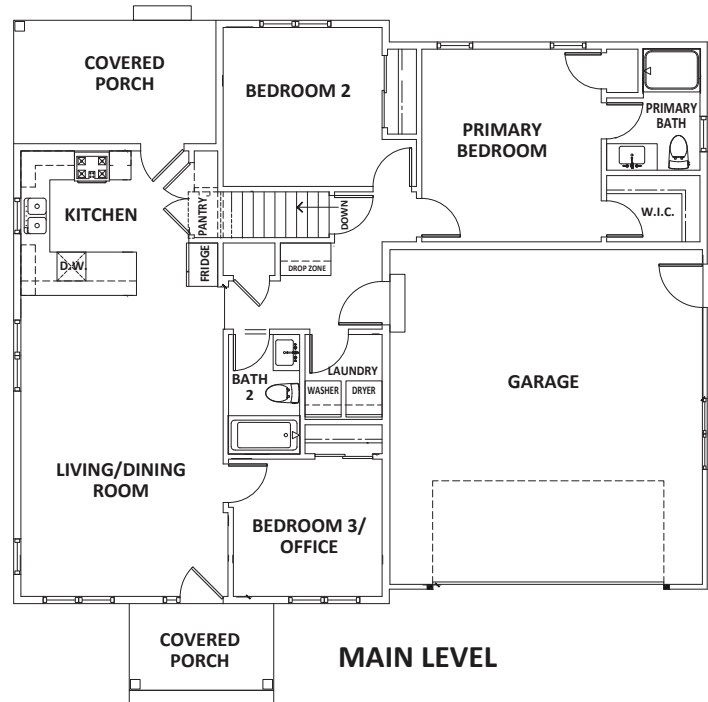


# Griffin

1,246 sq. ft.



## STANDARD FEATURES

- Poured Concrete Driveway
- 8' Exterior Walls
- 2x6 Walls w/ Tyvek Wrap
- Double 4" Vinyl Siding
- CertainTeed Landmark Dimensional Shingles
- 5" Aluminum Seamless Gutters
- Wrapped Porch Posts
- Steel Garage Doors with Keyless Entry and Remotes
- Solid Core Doors
- Wide Base & Casing
- Maple Cabinets
- Laminate Countertops
- Luxury Vinyl Plank Flooring
- Carpet in Bedrooms
- 3" Closed Cell Spray-Foam in Joist End
- R-50 Jetstream Fiberglass in Attic
- R-19 Batts in Exterior Walls
- Recessed Lighting
- 2 Switch Fan/Lights in all Bedrooms
- Designer Switches
- 200 Amp Panel
- Kohler Fixtures
- Sterling Tub Surrounds
- Water Softener Included
- 50 Gallon Water Heater
- 2 Exterior Hydrants
- Water Line to Refrigerator
- Rough-In For Basement Bathroom
- 96% Efficient Furnace
- 13 SEER Central Air
- Gas and Electric Supply to Stove and Dryer



**POSTHUMA**  
— HOMES —

920-226-4062 • [postumahomes.com](http://postumahomes.com)

Find us on

